

Photometric Report

ERA 600 – Medium

MARTIN PROFESSIONAL R&D OPTICAL LABORATORY

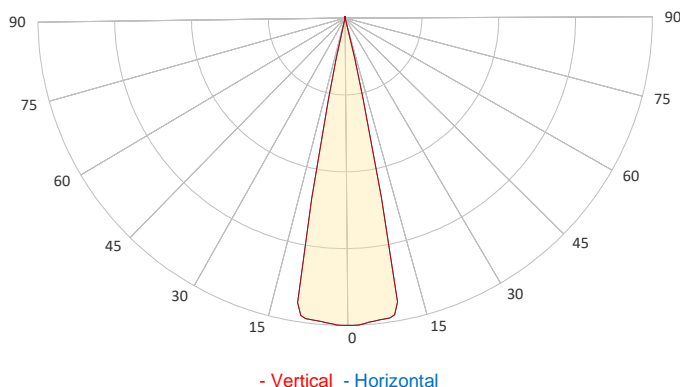
GENERAL SPECIFICATIONS

Total Fixture Output:	19000 lm
Light Engine Output:	37 klm
Efficacy:	25 lm/W
Lens Option:	N/A
Beam Angle (50%):	6-40°
Field Angle (10%):	°
Cut-off Angle (3%):	°
CRI:	70
CQS:	67
TM-30 Rf:	65
TM-30 Rg:	96
TLCI:	45
Color Temperature:	6800 K



SAMPLE MEASUREMENT

POLAR PLOT

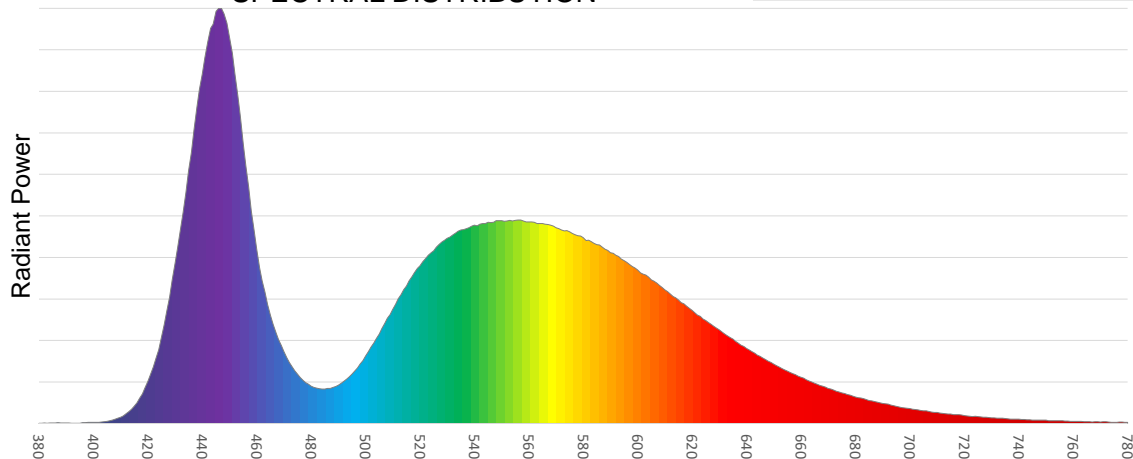


Catalog Number:	9025122049
Measured Output:	18100 lm
Measured Peak:	139050 cd
Consumed Power:	742.9 W
Efficacy:	25.1 lm/W

Beam Angle (50%):	22.6°
Field Angle (10%):	26.5°
Cut-off Angle (3%):	27.7°

Measurement Condition:	
Ambient Temperature:	25° +/- 5° C
AC Supply:	230V/50Hz
Fan Mode:	
Fixture Warm-up Time:	60 minutes

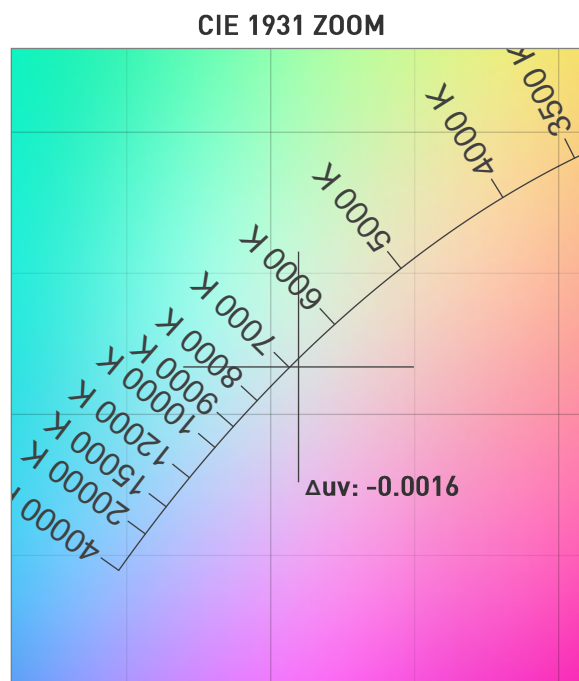
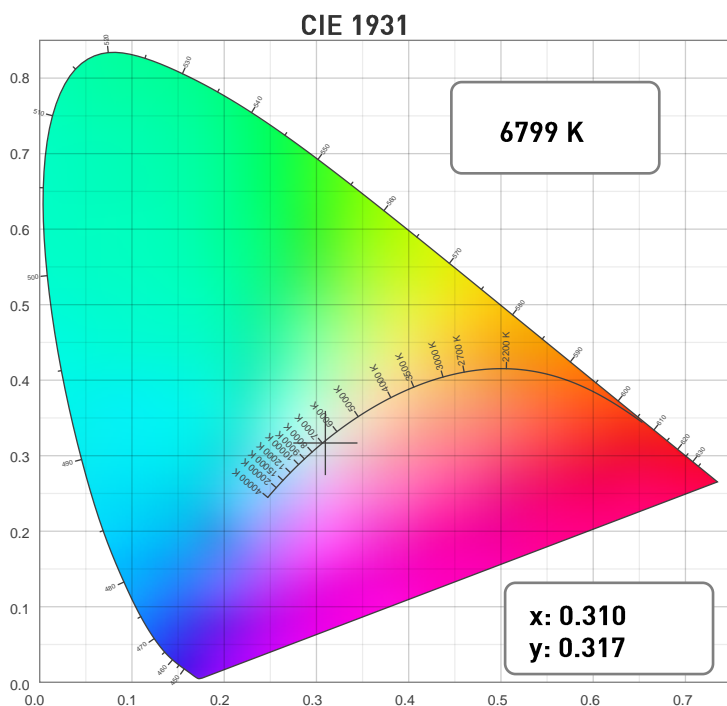
SPECTRAL DISTRIBUTION



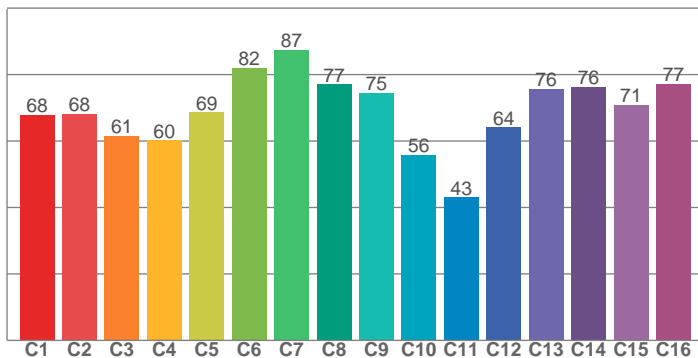
Photometric Report

ERA 600 – Medium

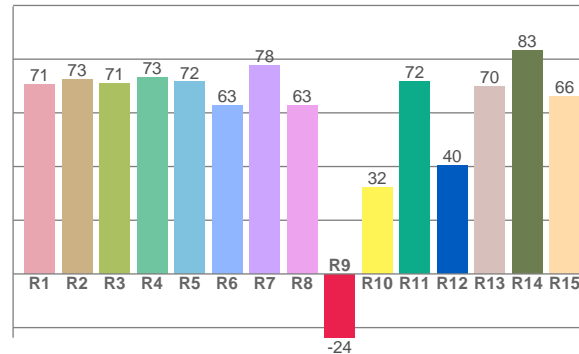
CHROMATICITY



TM30: 69.0



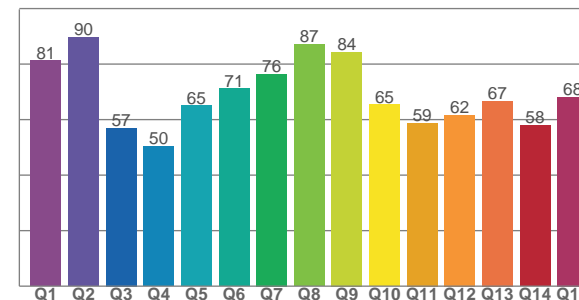
CRI: 70.3 (R1-R8)



COLOR PARAMETERS

Color Temperature	Color Rendering Index	Red Component	Color Fidelity	Color Gamut
CCT	CRI	CRI R9	TM30 Rf	TM30 Rg
6799 K	70.3	-23.8	69.0	95.5

CQS: 67.3



Television Lighting Consistency Index	Color Quality Scale	Color Coordinate CIE 1931	Color Coordinate CIE 1931	Color Coordinate CIE 1964	Color Coordinate CIE 1964	Color Deviation from Black Body
TLCI	CQS	x	y	u	v	Δuv
45	67.3	0.310	0.317	0.200	0.307	-0.0016

Photometric Report

ERA 600 – Medium

TM30

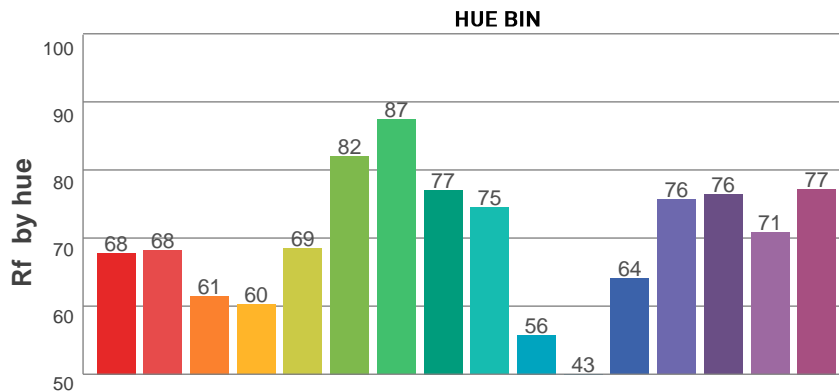
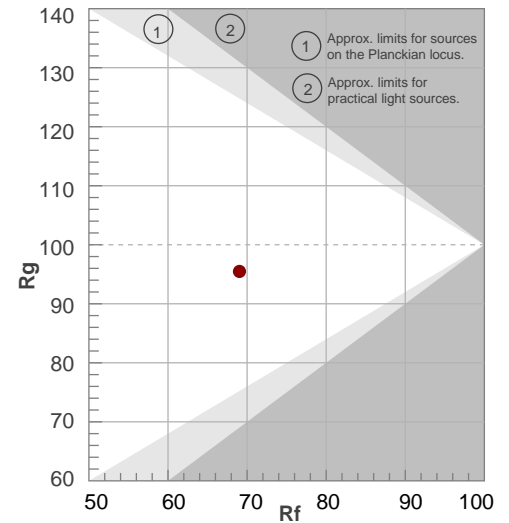
Rf 69.0

Fidelity index Rf

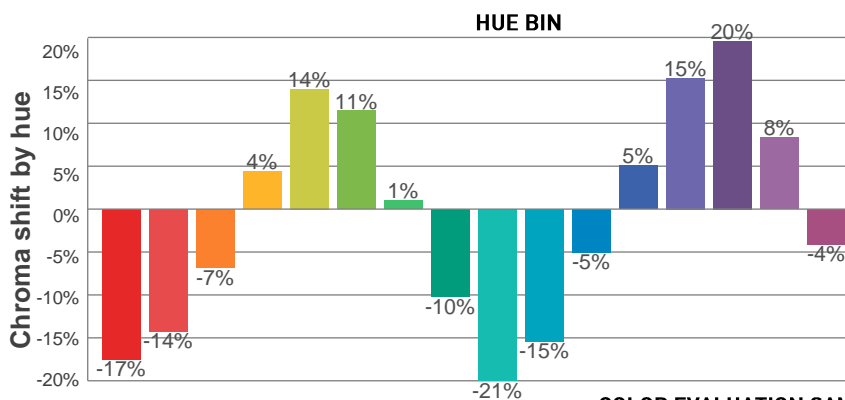
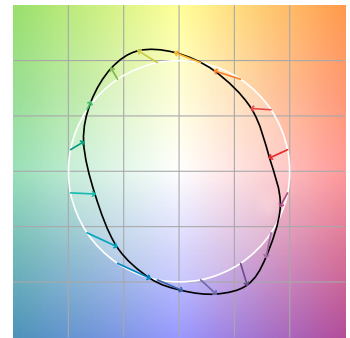
Rg 95.5

Gamut index Rg

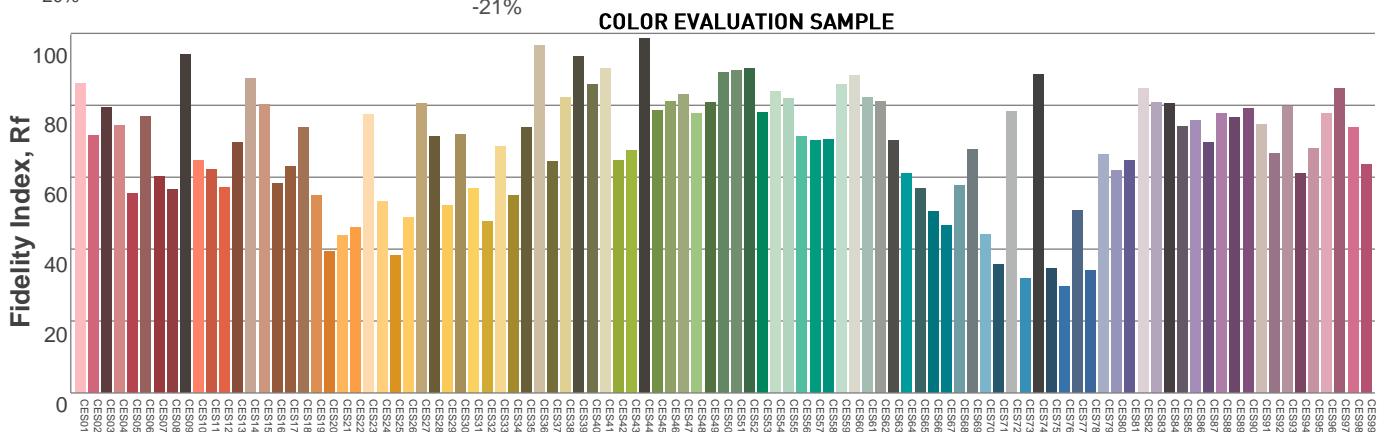
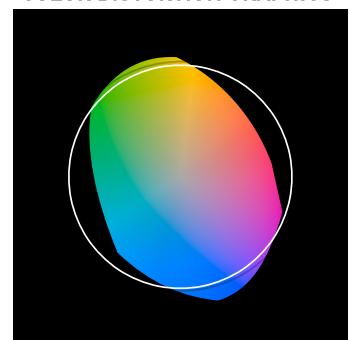
Hue Bin	Rf	Graphic shifts (%)	
		Chroma	Hue
1	68	-17%	-4%
2	68	-14%	11%
3	61	-7%	24%
4	60	4%	24%
5	69	14%	15%
6	82	11%	-1%
7	87	1%	-8%
8	77	-10%	-9%
9	75	-21%	5%
10	56	-15%	25%
11	43	-5%	32%
12	64	5%	24%
13	76	15%	11%
14	76	20%	-6%
15	71	8%	-21%
16	77	-4%	-13%



COLOR VECTOR GRAPHICS



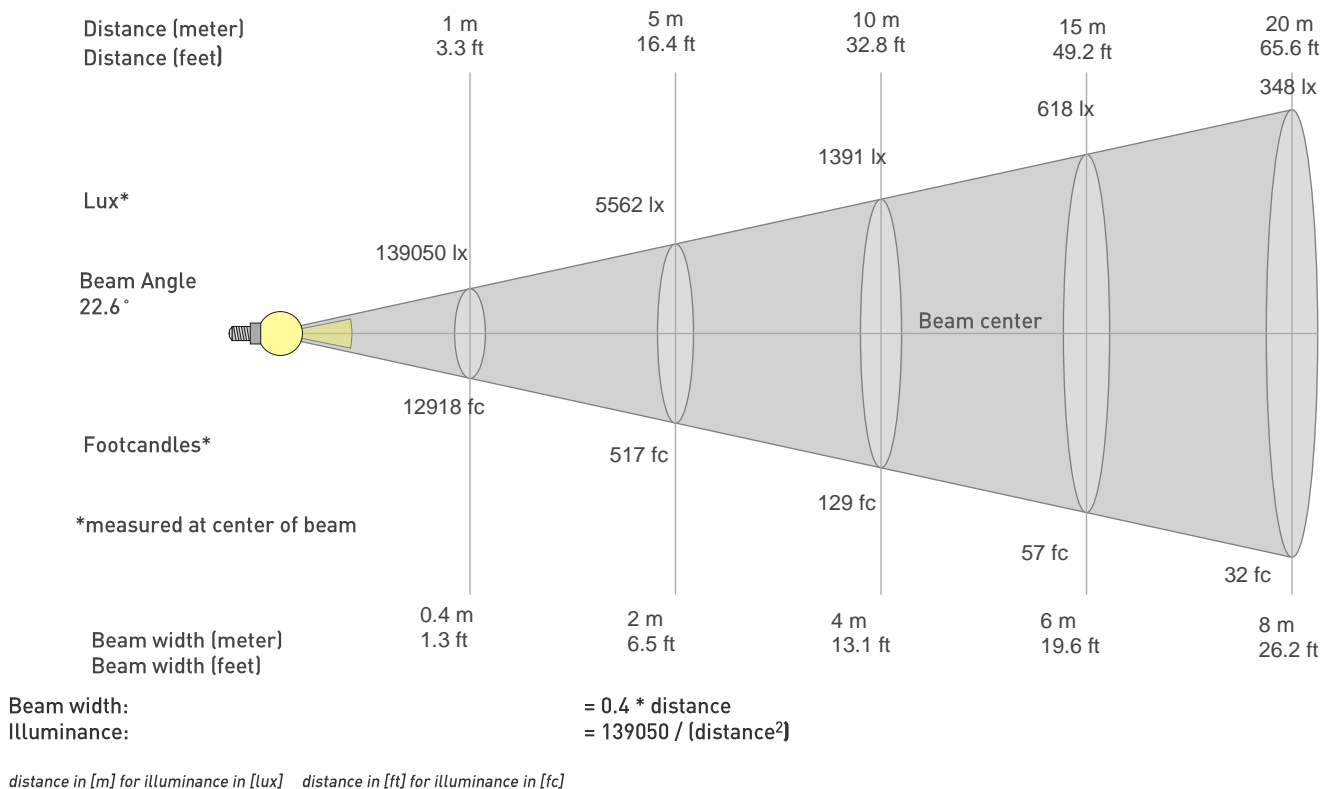
COLOR DISTORTION GRAPHICS



Photometric Report

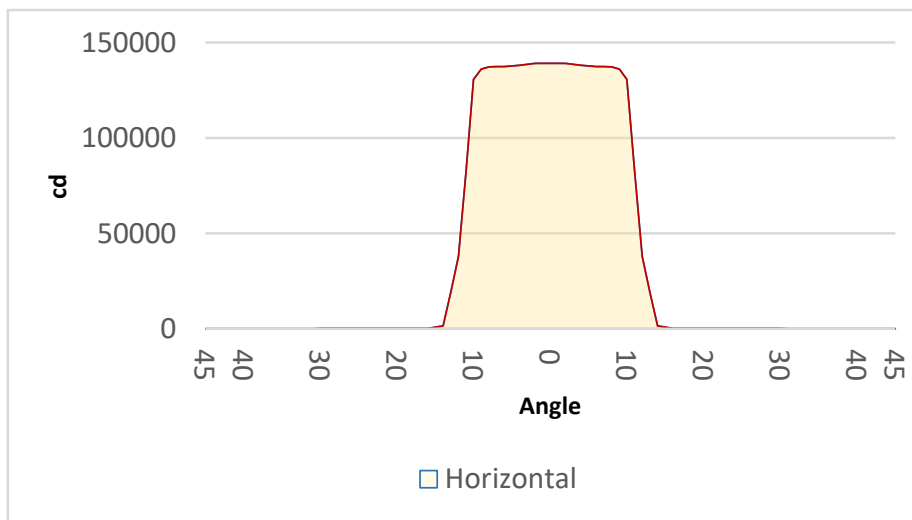
ERA 600 – Medium

BEAM DETAILS



BEAM ILLUMINANCE FROM 1-20M

1m	2m	3m	4m	5m	6m	7m	8m	9m	10m	11m	12m	13m	14m	15m	16m	17m	18m	19m	20m
3.3ft	6.6ft	9.8ft	13.1ft	16.4ft	19.7ft	23ft	26.2ft	29.5ft	32.8ft	36.1ft	39.4ft	42.7ft	45.9ft	49.2ft	52.5ft	55.8ft	59.1ft	62.3ft	65.6ft
139050lx	34763lx	15450lx	8691lx	5562lx	3863lx	2838lx	2173lx	1717lx	1391lx	1149lx	966lx	823lx	709lx	618lx	543lx	481lx	429lx	385lx	348lx
12918.2fc	3229.5fc	1435.4fc	807.4fc	516.7fc	358.8fc	263.6fc	201.8fc	159.5fc	129.2fc	106.8fc	89.7fc	76.4fc	65.9fc	57.4fc	50.5fc	44.7fc	39.9fc	35.8fc	32.3fc



BEAM ANGLE 50%	FIELD ANGLE 10%	CUTOFF ANGLE 3%
22.6°	26.5°	27.7°